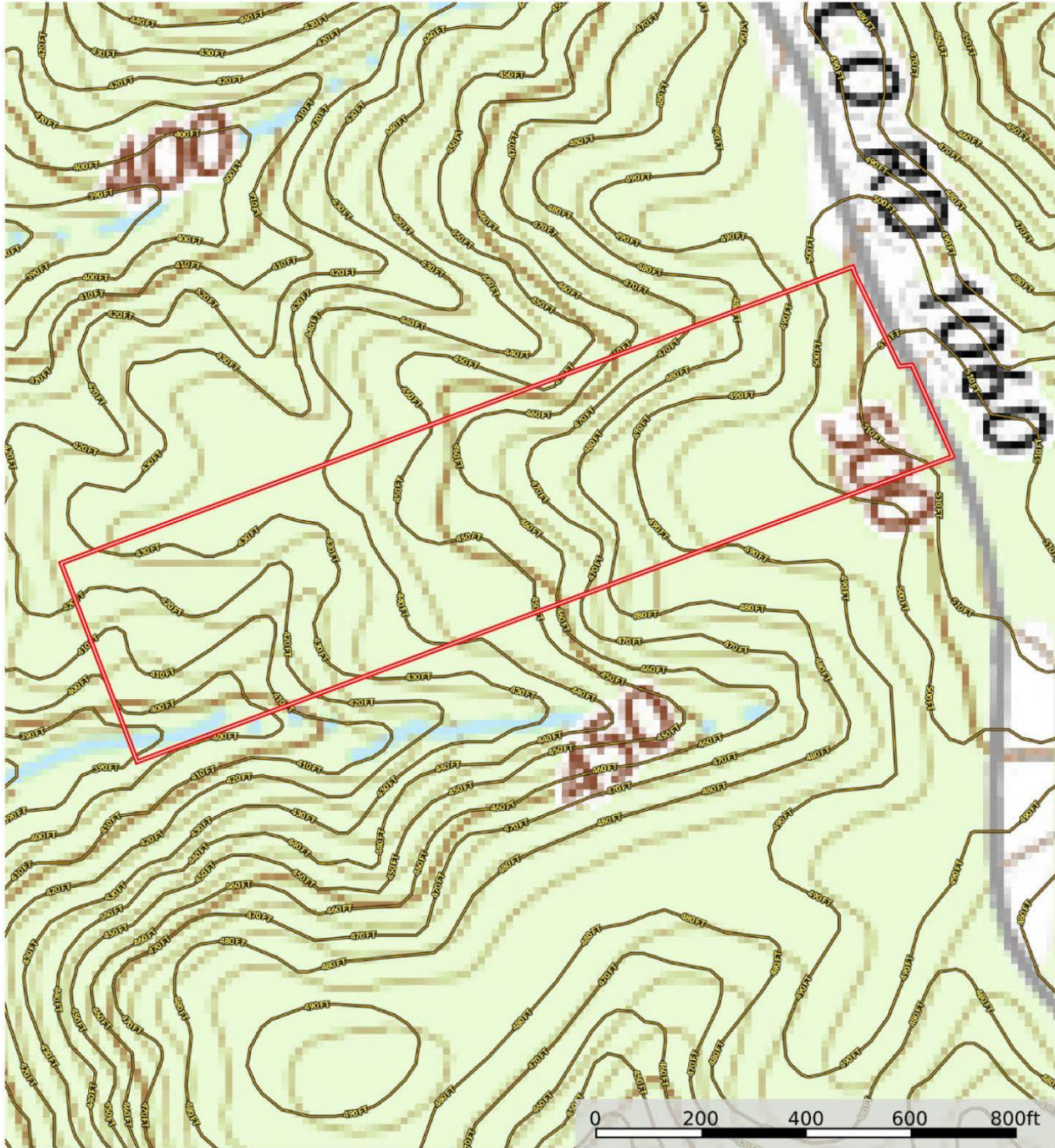


15.29 ac – Shelby Co, TX

TOPO

Shelby
15.29 +/- Acres

1388 County Road 1060, Center, TX, 75935
Shelby County, Texas, 15.29 AC +/-



Boundary
Conservation Easements

The information contained herein was obtained from sources deemed to be reliable. Land id™ Services makes no warranties or guarantees as to the completeness or accuracy thereof.



Data presented is for reference purposes only and cannot be guaranteed.

The information contained herein was obtained from sources deemed to be reliable. Land id™ Services makes no warranties or guarantees as to the completeness or accuracy thereof.

MORRIS
LAND BROKERS LLC